

# Spring 401-821-7300 1-800-294-LAWN (5296)

# Growing News

SeaScape, Inc. · 1610 Flat River Rd., Coventry, RI 02816 Green Landscape Solutions Since 1989



## About Today's Application 1

Thank you for using SeaScape for the upcoming season. Today we applied your first application, including fertilizer, crabgrass control and weed control. A few important things to remember about this application:

- Although **crabgrass** won't germinate until mid-May, crabgrass control begins now. Today's application of crabgrass preventer is only the start. For crabgrass to be reduced, proper mowing is critical. You must mow your lawn high (2" – 3") in order for the grass to successfully

compete with the crabgrass. If you have areas in your lawn that are thin or bare, no crabgrass preventer will totally control crabgrass.

- A few **leaves and sticks** on your lawn will not interfere with today's application. Raking the lawn will do no harm. However, you should avoid a deep dethatching, as it will break the crabgrass prevention barrier.
- Although broadleaf **weed control** (dandelions, clover etc.) was applied to existing weeds, weeds are better controlled when temperatures warm-up and the weeds begin active growth. We will retreat weeds at the time of your next application.

Included with this packet are discount coupons and important information on additional services:

- **EARN \$25** – refer a friend or neighbor to SeaScape and earn a \$25 coupon.
- Consider the purchase of **SeaScape's Tick Control Program**. Lyme disease is on the rise, with more people than ever at risk. Give us a call if you would like to hear more about this important program.
- **Tree service – TreeSolutions by SeaScape**. Coupons are enclosed for tree work (pruning & removals) – OR – request a free Tree & Shrub survey.

## Ask The Expert...

by Owner/President Jim Wilkinson PhD

**Q:** My lawn was under snow for several months this past winter. Will this have any impact on my lawn this spring?

**A:** The snow could affect your lawn in several ways.

**Snow mold**, a lawn damaging fungal disease that is active at low temperatures and under snow, will be evident on many lawns as the snow melts. Look for brown, matted down, water soaked grass patches, especially in areas where the snow was the heaviest: under snow piles and in shaded areas.

While snow mold can cause permanent damage to golf greens, it generally does NOT cause permanent damage to home lawns. This winter, with the

heaviest snowfall in years, could be an exception. Permanent damage to home lawns is possible. If there are areas in your lawn that are not recovering from snow mold, seeding will be required.

Most snow mold will recover quickly as warmer temperatures return. Recovery will be enhanced by simply raking out the matted down areas with a leaf rake.

**Salt damage** is another possibility. If you live on a street that is regularly salted by road crews, or if you used salt as ice melt on your drives or walks, there is the likelihood that excessive salt caused lawn damage along the edges. Damage is caused

*Continued on page 3.*

## What you need to do until our next visit:

- Rake your lawn lightly to remove leaves and sticks. Any brown areas "matted down" due to snow mold disease should be raked out to enhance spring growth and recovery.
- Begin to mow your lawn as growth resumes. Resist the temptation to mow low. Start now mowing your lawn HIGH to minimize crabgrass and weeds later in the season.
- Avoid spring dethatching, power raking or aeration. While these practices may be beneficial, in the spring they will encourage crabgrass and weeds. Fall is a much better time to do them.
- As always, please feel free to call us at any time should you have a question or problem with your lawn.



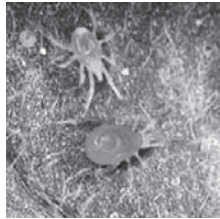


## Plant Health Care

**TreeSolutions Plant Health Care program** provides the very finest in care for your trees and shrubs. This service adds value to your property and helps control destructive insects and diseases. It prevents future attacks and improves the overall vigor, growth, flowering and fruiting of small trees and shrubs. Treatments are made using IPM (Integrated Pest Management) principles to ensure limited and efficient use of pest control materials.

**Now is the time** to check your trees and shrubs for insects and diseases. If you notice any chewing of the leaf edges, they may have caterpillars or beetles. If your new leaves are discolored, they might have nutrient deficiencies. If your leaves have browning at the edges or yellow to brown discolored spots, they may have a disease.

**Later in the season**, when the weather turns hot, Alberta spruces and broadleaf evergreens like azaleas, may develop stippled leaves caused by mites and/or lacebugs.



**CALL FOR A FREE NO OBLIGATION COST ESTIMATE NOW.** SeaScape technicians will help you determine the best program for the remainder of this season. Starting a program now decreases diseases and insects for the rest of this year.



**Plant Health Care**  
**1/2 OFF Your First Application**  
When you purchase a complete Tree and Shrub Care Program.  
 New customers only. Cannot be combined with other offers. Expires 06-30-11.

- Insect Control
- Disease Control
- Deep Root Fertilization

HALFOFFS



**Tree Service –**  
**Removal, Trimming, Ornamental Shrub Pruning**  
Limit one coupon per customer. Cannot be combined with other offers. Expires 06-30-11.

SAVEONTREE

**Save \$25**  
on orders between \$300 and \$600

**Save \$50**  
on orders between \$601 and \$1,200

**Save \$100**  
on orders over \$1,201



## Pest Alert

The **WINTER MOTH** caterpillar emerges in early spring and has already started eating in the buds of trees before the buds have opened. This small, up to an inch, caterpillar in large



numbers can defoliate your maples, apples, crabapples, and especially ornamental cherries. Call SeaScape to get on the winter moth program before severe damage is done this spring.

The **HEMLOCK WOOLLY ADELGID** is a serious pest of eastern and Carolina hemlocks. White cottony egg sacs at the base of the needles are present throughout the year but most prominent in the early spring.

Hemlock woolly adelgid feeds from fall through mid-July with the most visible damage in the spring. The insect withdraws the sap from young twigs using piercing-sucking mouth parts causing needles to discolor and drop prematurely. Defoliation and tree death can occur within several years.



## Tree Service

**TreeSolutions Tree and Shrub Pruning and Removal Program** has experienced licensed Arborists who are knowledgeable in the proper care and pruning of you trees and shrubs. This winter has been especially harsh on trees and shrubs. Heavy snows have broken or split limbs and branches. Some trees may have tipped or blown over. Shrubs have been crushed under snow and ice from snow plowing.

**Our professionals** can assess the damage and correct any problems for the best health of your plants. The sooner the injuries to your trees and shrubs are addressed, the sooner the plants can recover and respond to be attractive components of your landscape.

**CALL FOR A FREE NO OBLIGATION COST ESTIMATE NOW**

# SeaScape

## Lawn Care

# Pest Control

Please see additional information left with today's application regarding these important Pest Control services. Pricing for your lawn is included.

## Tick & Flea Control



### Ticks

Unfortunately, ticks are a fact of life here in New England. Ticks are the second highest carrier of diseases (mosquitoes are the first) and nearly 90% of all Lyme disease cases come from New England. If you have a child, pet or simply like to spend time outdoors you've most likely had encounters with these disease carrying arachnids. Ticks can generally be found in taller grass, shrubbery and brushy areas. Protect your children and pets from Lyme disease carrying ticks with SeaScape's Tick Control Program.



### Fleas

Fleas live in your grass and dirt and thrive during hot, humid weather. Their bites can cause skin irritations to your family and pets, and can also transfer the tapeworm parasite.

**SeaScape's Tick & Flea Control Program** consists of 3 applications of insect control to minimize tick and flea populations. All lawn areas as well as 5'-10' into bordering wooded areas will be treated. These applications will be performed in conjunction with your 2nd, 3rd and 4th lawn care treatments.

*Due to the mobility of these insects 100% control cannot be expected. The intention of this program is to minimize the population of ticks and fleas on your property, therefore, significantly reducing potential exposure to your family and pets.*

*Ask the Expert, continued...*

by the salt simply burning the grass plants. Even many of the "safer" ice melts can cause damage when used frequently.

If salt damage has occurred, the damage will be permanent. Repair, through seeding or sod, will be the only option.

**Ice damage** can occur in low lying areas where ice is present for several weeks. The ice, unlike snow, will reduce oxygen available to grass plants and death can occur in prolonged cases. Repair by seeding or sod would be the only option.

**Rodent damage** is another possibility. Rodents, especially

## Perimeter Pest Control

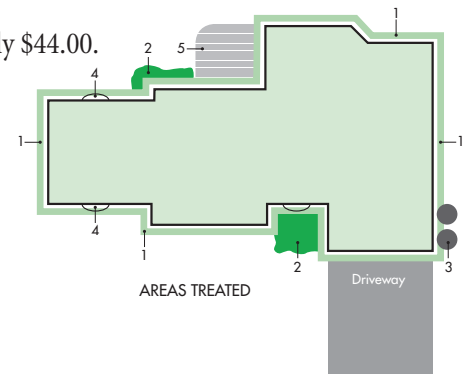
90% of the pests that you see inside come from the outside. SEASCAPE'S PERIMETER PEST CONTROL PROGRAM will stop these pests BEFORE they get in avoiding the use of pesticides inside your home. A 2'-3' wide protective barrier will be applied to the entire foundation including 1'-2' up the foundation wall<sup>1</sup>. Also treated are mulch/shrub beds<sup>2</sup>, trash areas<sup>3</sup>, window wells/thresholds<sup>4</sup> and under decks<sup>5</sup>. We treat just about anywhere invading insects like to hide. Treatments are effective for ants, crickets, silverfish, millipedes and many more. In addition to providing an insect barrier, SEASCAPE'S PERIMETER PEST CONTROL PROGRAM also targets mice and rats from the outside. Up to 4 tamper proof bait boxes will be placed around the perimeter of your home which are common entry points for these rodents.



**ALL BAIT BOXES ARE LOCKED AND ARE CHILD/PET PROOF FOR PROTECTION.**

**COST:** Each visit is only \$44.00.

There is a one-time set up fee of \$49.00 at the time of the first visit to cover the cost of the bait boxes.



mice, get so hungry during such a snowy winter that they will resort to eating the green grass. They will venture out under snow and eat grass (it does contain a small amount of nutrition for them). The damage is generally in close proximity to areas where the mice might be living during the winter, such as close to shrub areas, stone walls or woodpiles.

Their damage will appear as "tunnels" of grass eaten in random patterns. It is usually not permanent. Simply rake out these areas to remove any dead grass and encourage recovery as the grass resume growth.

# Keep SeaScape in mind for all your landscape needs

## SeaScape Lawn Care

### Lawn Care Services

Lawn Fertilization  
Core Aeration  
Lawn Seeding  
Vegetation Management

### Pest Control Services

Tick Control  
Mosquito Control  
Perimeter Pest Control  
Deer Repellant

### Commercial Landscape Maintenance

Weekly Mowing  
Spring/Fall Clean-Up  
Bed Maintenance/Mulching  
Snow Plowing

## TreeSolutions By SeaScape

### Tree Service

Tree Removal/Trimming  
Stump Grinding  
Hazardous Tree Assessment

Ornamental Shrub Pruning  
Brush Clearing  
Cabling/Bracing

### Plant Health Care

Insect/Disease Control  
Root Fertilization  
Trunk Injection  
Deer Repellant

## Christmas Decor By SeaScape

### Holiday & Event Lighting

## Customer Referral Program

At SeaScape, most of our new customers are referred to us by one of our many satisfied customers. If you have a friend, relative, neighbor or co-worker who you think might be interested in any one of our services we would love to hear about it. If they become a customer, we'll send you a \$25 coupon good toward any SeaScape service. Your referral will receive 50% off their first lawn care or plant health care application. Please, out of respect for your referral's privacy be sure to inform them that you are giving us their name, address and phone number.. Thank you!

(Offer valid for new, first time SeaScape customers only. There is no limit on the number of referrals that each customer can submit. Only one SeaScape customer may receive credit for each referral.)

Proudly serving residential and commercial properties throughout RI, SE MA, and Central/SE CT.

Contact us for a free, no obligation estimate!

1-800-294-LAWN (5296) / [www.seascapeinc.com](http://www.seascapeinc.com)